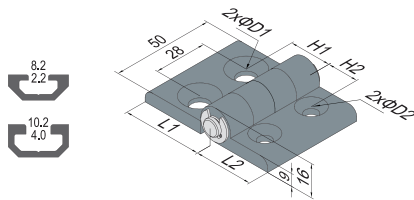
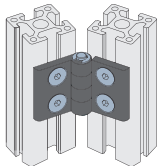


合页

合页 - 增强尼龙 6

材质	颜色	特殊用途
增强尼龙 6	黑色	Clean Room

■ 安装范例



产品描述	H1 (mm)	H2 (mm)	L1 (mm)	L2 (mm)	D1 (mm)	D2 (mm)	紧固组件	重量 (g)	订购编号
20/20 单个供货	10	10	19	19	4.5	4.5		29	GC-20-20
20/20 (成套供货)	10	10	19	19	4.5	4.5	2xA45	49	GC-20-20-ST
30/30 单个供货	15	15	31	31	6.5	6.5		41	GC-30-30
30/30 (成套供货)	15	15	31	31	6.5	6.5	4xA47	71	GC-30-30-ST
30/40 单个供货	20	15	39	31	8.5	6.5		44	GC-30-40
30/40 (成套供货)	20	15	39	31	8.5	6.5	2xA44+2xA47	94	GC-30-40-ST
40/40 单个供货	20	20	39	39	8.5	8.5		47	GC-40-40
40/40 (成套供货)	20	20	39	39	8.5	8.5	4xA44	108	GC-40-40-ST
40/45 单个供货	22.5	20	42	39	8.5	8.5		48.5	GC-40-45
40/45 (成套供货)	22.5	20	42	39	8.5	8.5	4xA44	109.5	GC-40-45-ST
45/45 单个供货	22.5	22.5	42	42	8.5	8.5		50	GC-45-45
45/45 (成套供货)	22.5	22.5	42	42	8.5	8.5	4xA44	111	GC-45-45-ST

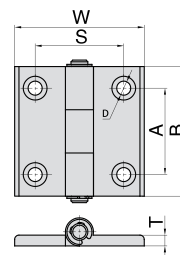
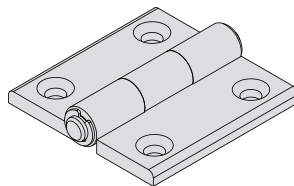
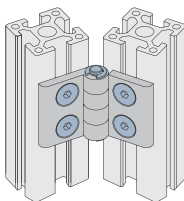
■ 紧固组件

A44	A45	A47
内六角沉头螺钉 M8x16	内六角沉头螺钉 M4x10	内六角沉头螺钉 M6x12
T形螺母 M8	T形螺母 M4	T形螺母 M6

合页 - 铝合金 - 沉孔

材质	颜色	特殊用途
铝合金	光亮氧化	Clean Room

■ 安装范例



产品描述	W (mm)	B (mm)	S (mm)	A (mm)	D (mm)	T (mm)	紧固组件	重量 (g)	订购编号
20/20 单个供货	35	47	21	25	5.5	3		22	GD-20-20
20/20 (成套供货)	35	47	21	25	5.5	3	4xA108	29.12	GD-20-20-ST
30/30 单个供货	50	50	31	30	6.5	4		43	GD-30-30
30/30 (成套供货)	50	50	31	30	6.5	4	4xA47	68.6	GD-30-30-ST
40/40 单个供货	60	60	41	40	6.5	5		60	GD-40-40
40/40 (成套供货)	60	60	41	40	6.5	5	4xA109	108	GD-40-40-ST
45/45 单个供货	70	60	46	40	6.5	5		70	GD-45-45
45/45 (成套供货)	70	60	46	40	6.5	5	4xA109	118	GD-45-45-ST
40/45 单个供货	70	60	43	40	6.5	5		65	GD-40-45
40/45 (成套供货)	70	60	43	40	6.5	5	4xA109	13	GD-40-45-ST
30/40 单个供货	60	60	36	40	6.5	5		60	GD-30-40
30/40 (成套供货)	60	60	36	40	6.5	5	4xA109	108	GD-30-40-ST

■ 紧固组件

A108	A109	A47
内六角沉头螺钉 M5x8	内六角沉头螺钉 M6x16	内六角沉头螺钉 M6x12
T形螺母 M5	T形螺母 M6	T形螺母 M6