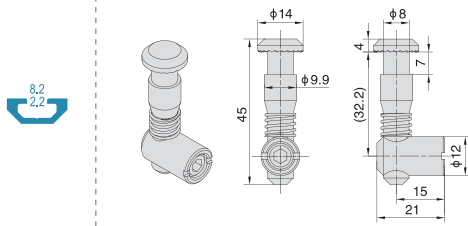


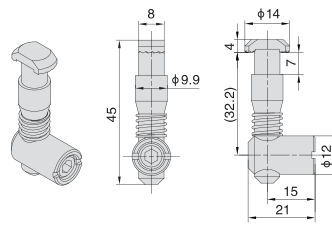
锚式连接销 30 系列

万向型 / 标准型 / 转角型 / 对接型

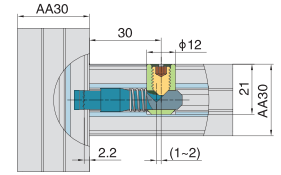
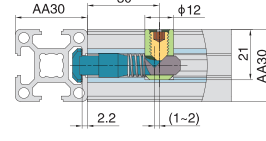
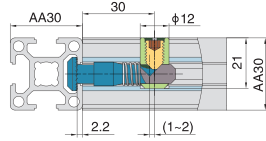
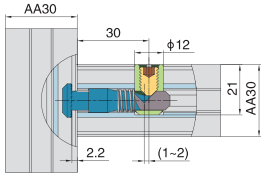
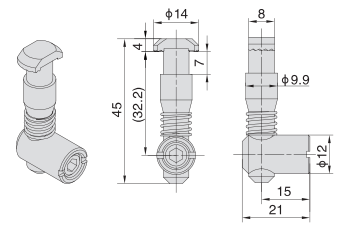
■万向型



■标准型 (P)

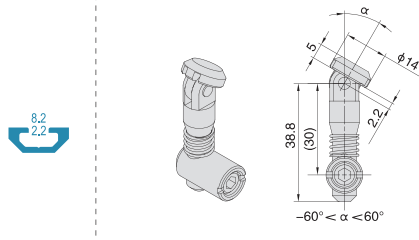


■标准型 (C)

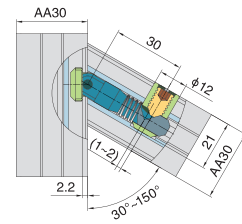
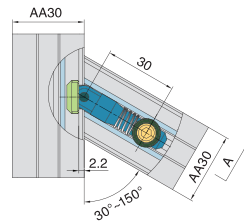
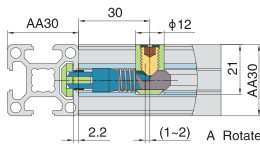
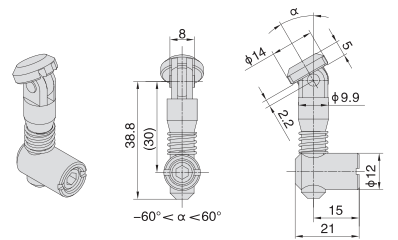


产品描述	材质	重量 (g/unit)	订购编号
锚式连接销-30系列-万向型	碳钢镀锌	22.6	CA-30-01
锚式连接销-30系列-标准型(P)	碳钢镀锌	31.6	CA-30-02
锚式连接销-30系列-标准型(C)	碳钢镀锌	31	CA-30-03

■转角型 (P)

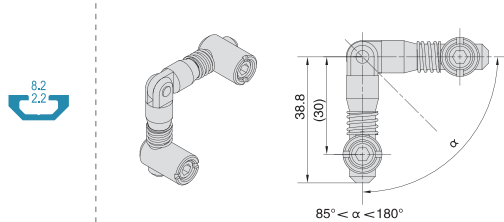


■转角型 (C)

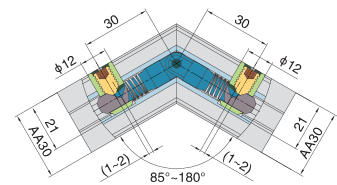
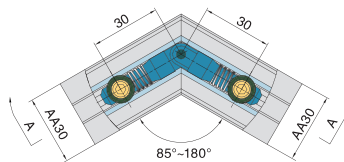
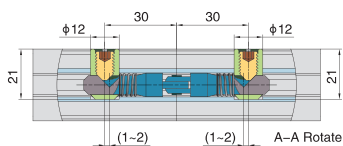
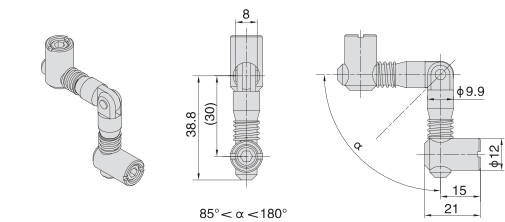


产品描述	材质	重量 (g/unit)	订购编号
锚式连接销-30系列-转角型(P)	碳钢镀锌	32.4	CA-30-04
锚式连接销-30系列-转角型(C)	碳钢镀锌	32.4	CA-30-05

■对接型 (P)



■对接型 (C)



产品描述	材质	重量 (g/unit)	订购编号
锚式连接销-30系列-对接型(P)	碳钢镀锌	52.6	CA-30-06
锚式连接销-30系列-对接型(C)	碳钢镀锌	52.2	CA-30-07